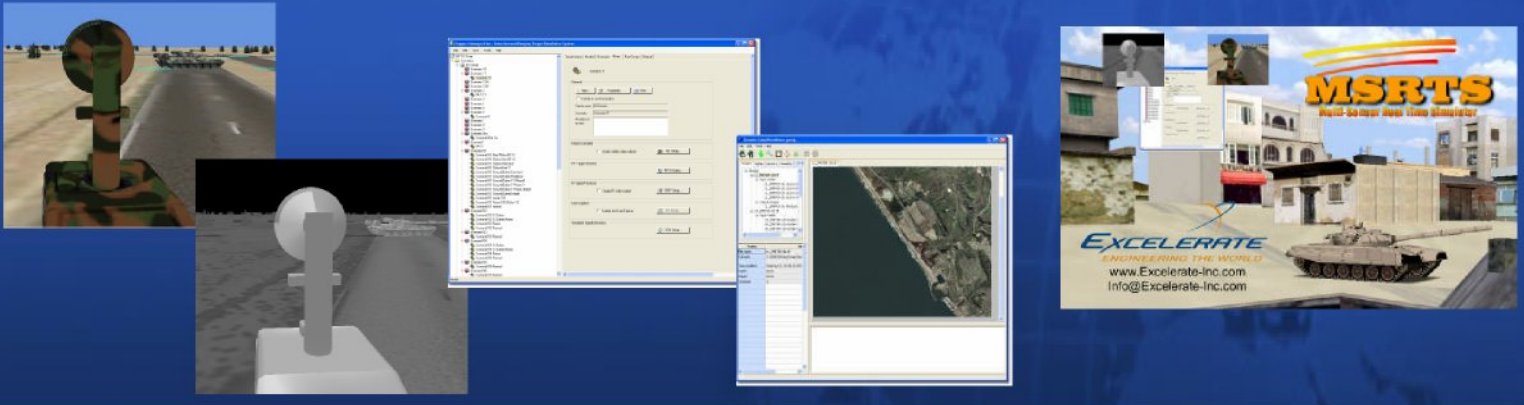


MSRTS

Multi-Sensor Real Time Simulator

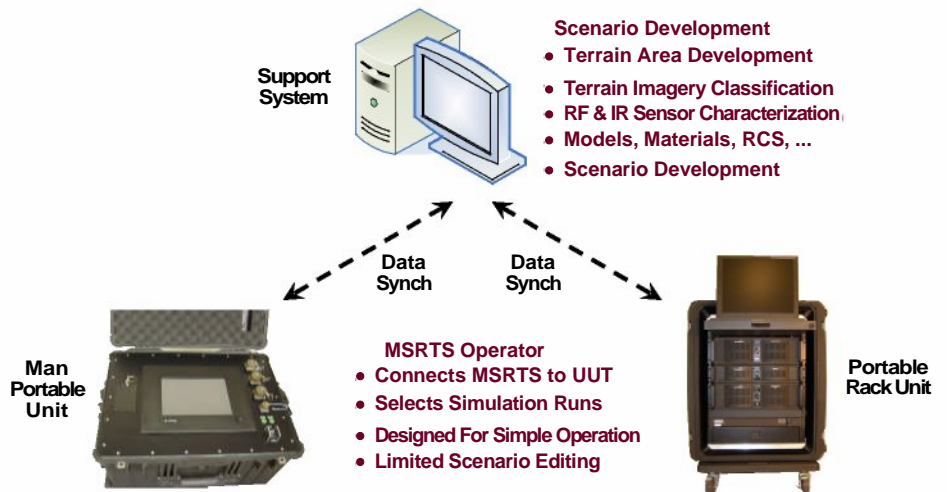


Summary

- Realtime IR, Ladar, and MMW simulator.
- Rack mounted or portable weather resistant version
- High fidelity 3D graphics
- Easily adaptable interface
- Multilingual operational GUI
- Scenario development station
- Radiometrically accurate based on scenario and system parameters.

MSRTS is an affordable, exportable, configurable, and accurate infrared (IR) and radar simulator for signal injection, HWIL, and visualization applications.

The Multi-Sensor Real Time Simulator (**MSRTS**) provides an affordable path to real time sensor simulation. Based on off the shelf components and commercial software the full suite of applications. The Multi-Sensor Real Time Simulator (MSRTS) is radiometrically correct dynamic scene visulation for desktop or hardware in the loop applications. MSRTS is highly configurable including sensor suite, portability, support, and connectivity.



For more information, please contact:

Exceletrate, Inc.
1230 Slaughter Road, Suite F
Madison, ALabama 35758
U.S.A.

Info@Exceletrate-Inc.com
Phone: (256) 325-4050
Fax: (256) 325-4052

www.Exceletrate-Inc.com

U.S. export license required.
Contact Exceletrate to see if you qualify.